

THE VILLAGE AT WILTON MANORS

LISTED BY RE/MAX EXPERIENCE



THE VILLAGE AT WILTON MANORS

THE VILLAGE AT WILTON MANORS

Wilton Manors, Florida



NE 21ST COURT

THE VILLAGE AT WILTON MANORS *Wilton Manors, Florida*



VIEW OF NE 21ST CT & NE 22ND DR INTERSECTION

NE 22ND DR.

THE VILLAGE AT WILTON MANORS

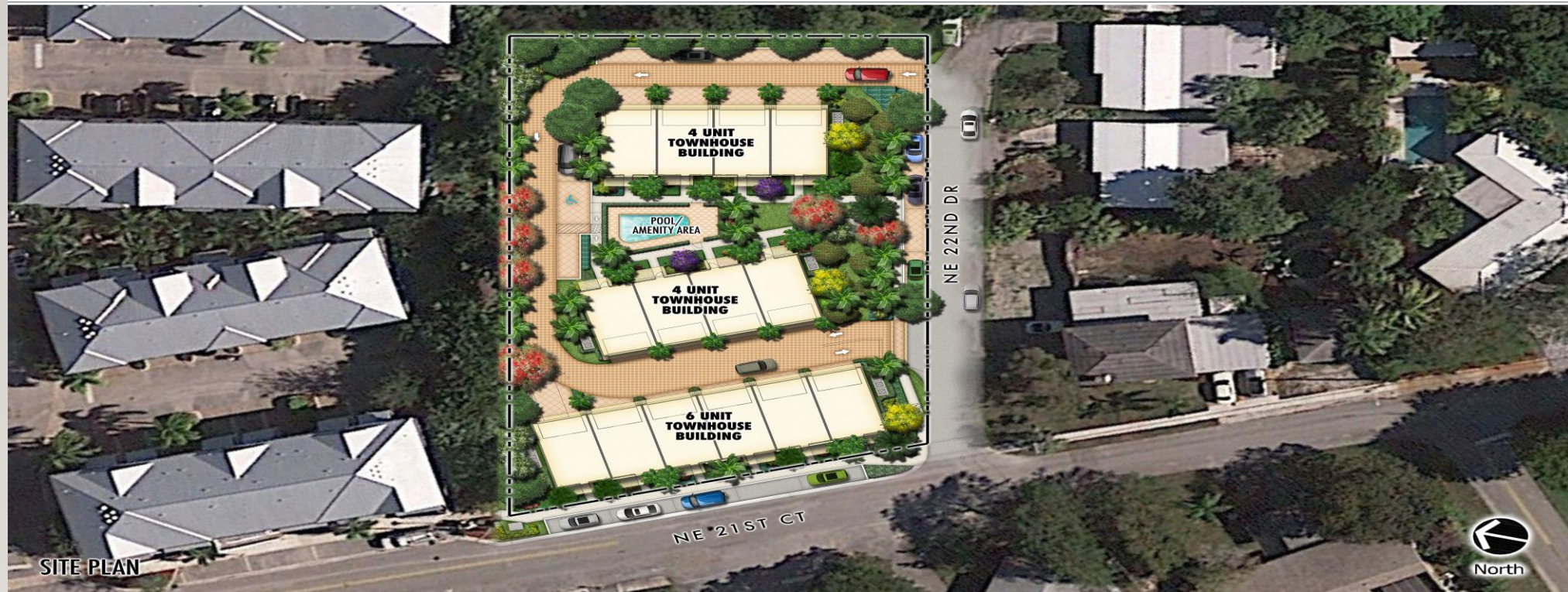
Wilton Manors, Florida



VIEW OF NE 22ND DR

AERIAL VIEW OF PROJECT

THE VILLAGE AT WILTON MANORS *Wilton Manors, Florida*

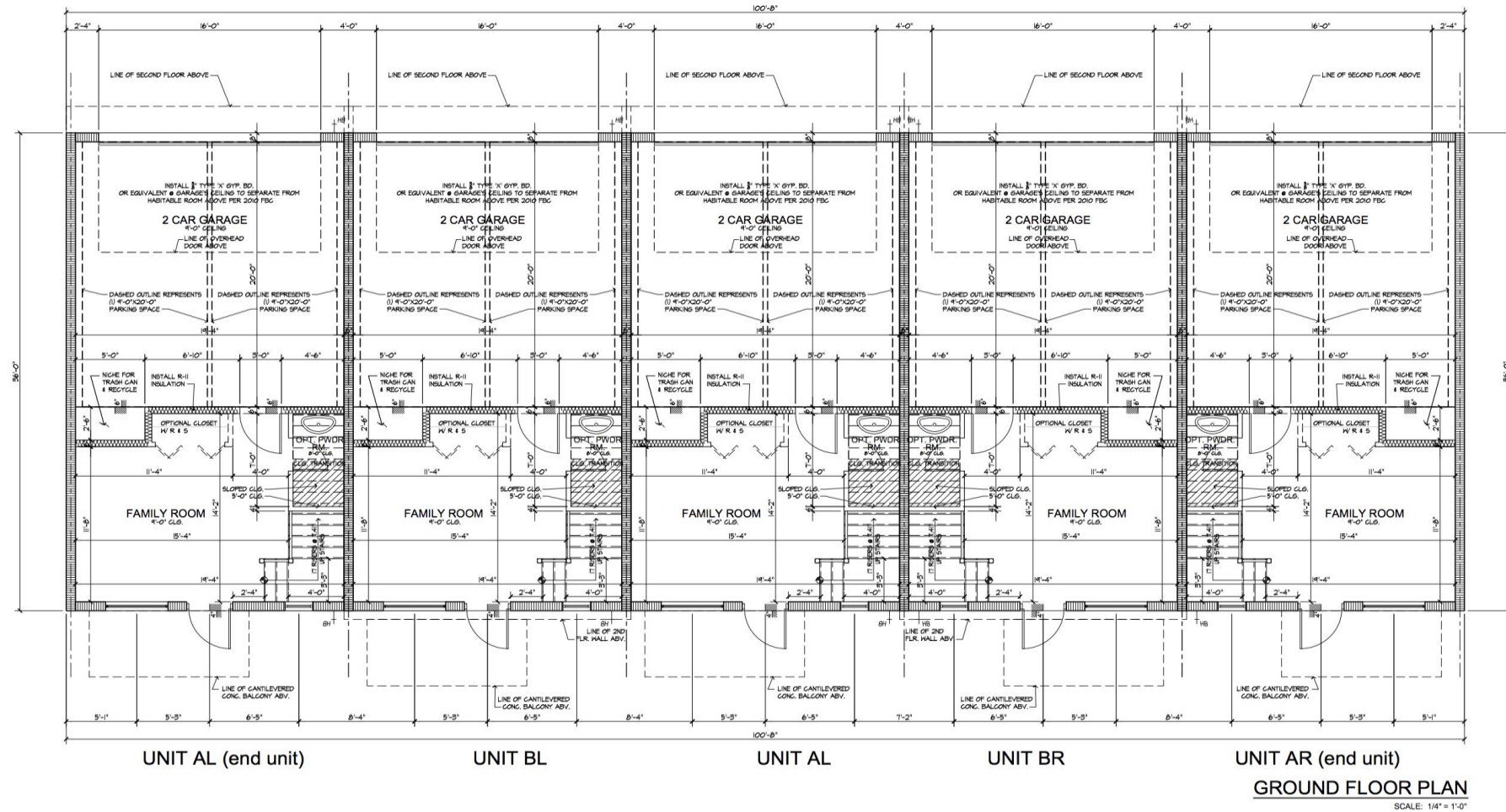


THE VILLAGE AT WILTON MANORS

- **The Village at Wilton Manors is a limited opportunity to purchase a new construction townhome in an intimate community just a block from all the excitement of Wilton Drive. This exclusive New Urban Communities development listed by RE/MAX Experience consists of just 14 townhomes in three buildings surrounding a lushly landscaped courtyard with a community pool.**
- **Bright and airy modern townhomes at the Village at WM will feature open floor plans with high ceilings, two car garages with electrical car charging outlets, balconies, gourmet kitchens and luxurious master suites.**
- **Residents can play tennis across the street at Hagen Park or explore the area's waterways via kayak at Richardson Park, just one block away. There are numerous dining and entertainment options in the Wilton Drive Arts and Entertainment District. Downtown Fort Lauderdale w/its many museums, galleries, cultural institutions and vibrant shopping/dining districts is just 2 miles south, and the beach is 3 miles to the east. Grocery stores are plentiful with Publix, Whole Foods, Trader Joe's, Fresh Market & Lucky's nearby, as are the AMC dine-in theaters at Coral Ridge.**



GROUND FLOOR PLAN



BUILDING ABABA
5 UNITS
project

ARCHITECTURAL
Studio, Inc.

Architecture
•
Planning

300 Avenue of Champions
Suite 260
Palm Beach Gardens, Florida 33418

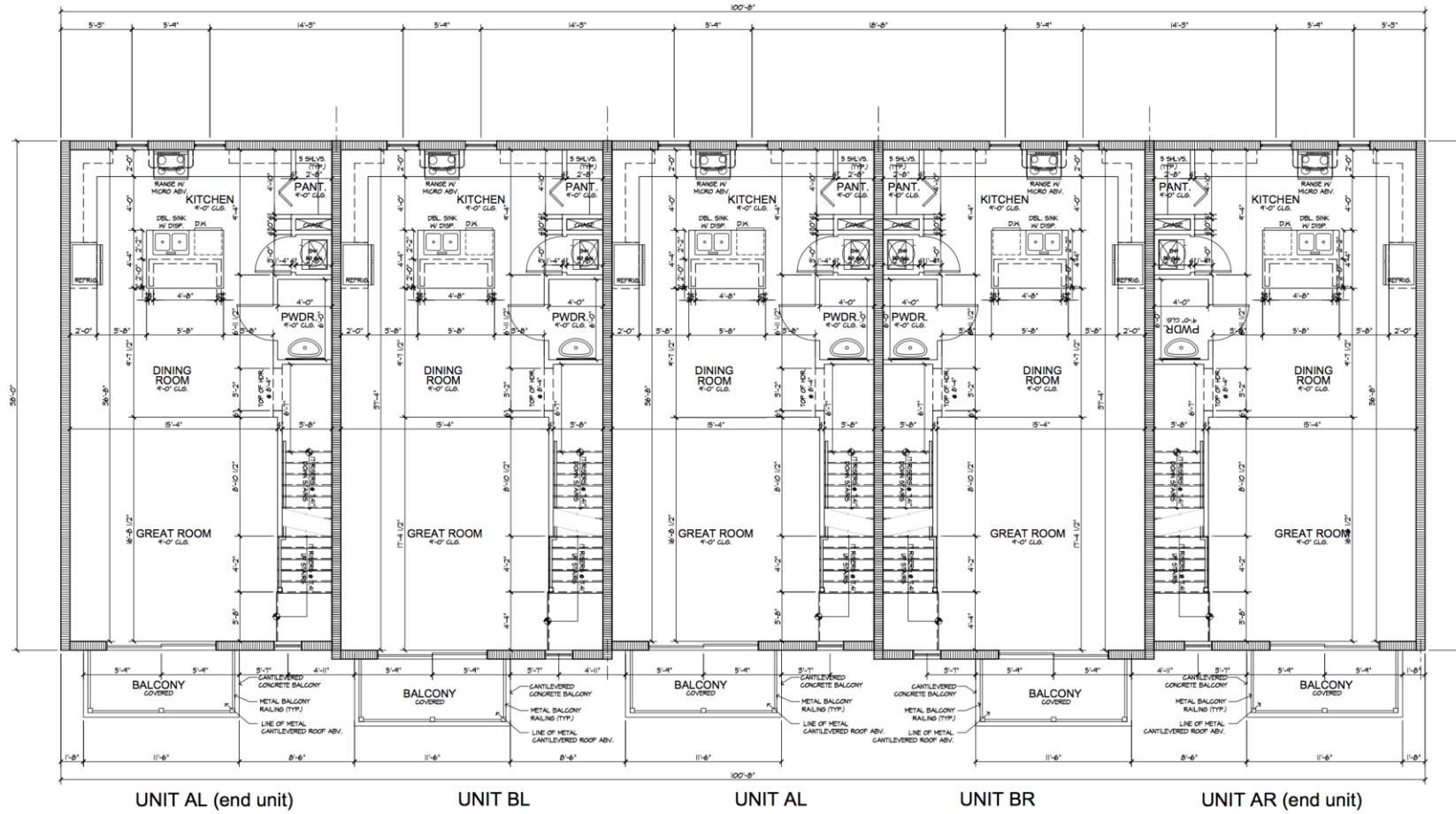
Phone 561.282.6990
Fax 561.296.2494
archstudiofl.com

drawing
GROUND
FLOOR PLAN

sheet
A-1

LOT #
THE VILLAGE AT WILTON MANORS
WILTON MANORS, FLORIDA

SECOND FLOOR PLAN



SECOND FLOOR PLAN

SCALE: 1/4" = 1'-0"

BUILDING ABABA
5 UNITS
project

ARCHITECTURAL
Studio, Inc.

Architecture
Planning

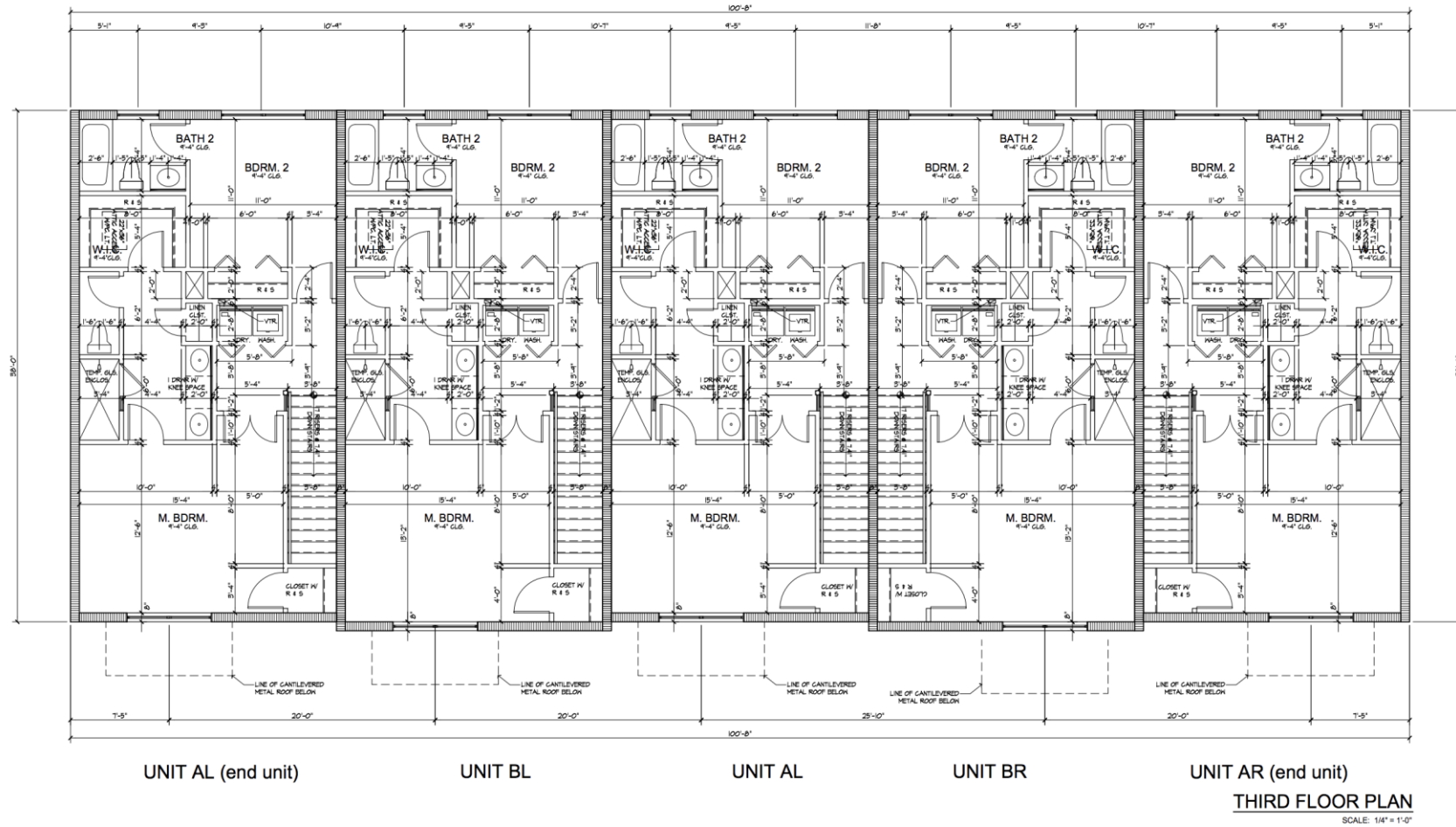
300 Avenue of Champions
Suite 300
Palm Beach Gardens, Florida 33418
Phone 561.282.6990
Fax 561.286.2494
archstudiofl.com

drawing
SECOND
FLOOR PLAN

sheet
A-2

LOT #
THE VILLAGE AT WILTON MANORS
WILTON MANORS, FLORIDA

THIRD FLOOR PLAN



BUILDING ABABA
5 UNITS
project

LOT #
THE VILLAGE AT WILTON MANORS
WILTON MANORS, FLORIDA

ARCHITECTURAL
Studio, Inc.

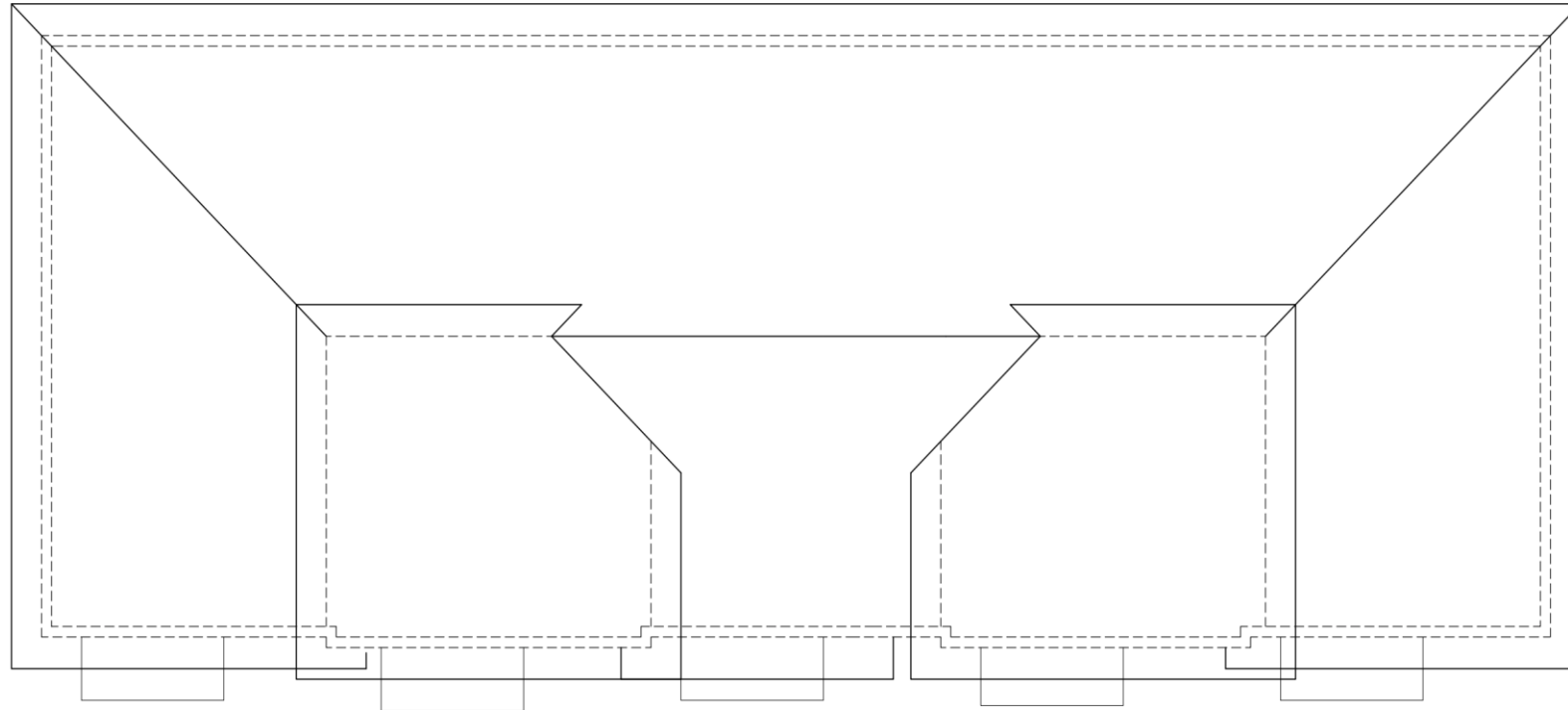
Architecture
•
Planning

300 Avenue of Champions
Suite 200
Palm Beach Gardens, Florida 33418
Phone 561.202.6990
Fax 561.296.2694
archstudiofl.com

drawing
**THIRD FLOOR
PLAN**

sheet
A-3

ROOF PLAN



UNIT AL (end unit)

UNIT BL

UNIT AL

UNIT BR

UNIT AR (end unit)

ROOF PLAN

SCALE: 1/4" = 1'-0"

BUILDING ABABA
5 UNITS
project

LOT # _____
THE VILLAGE AT WILTON MANORS
WILTON MANORS, FLORIDA

ARCHITECTURAL
Studio, Inc.

Architecture
•
Planning

300 Avenue of Champions
Suite 200
Palm Beach Gardens, Florida 33418

Phone 561.202.8990
Fax 561.296.2494
archstudiofl.com

drawing
ROOF PLAN

sheet
A-4

FRONT ELEVATION



BUILDING ABABA
5 UNITS
project

LOT # _____
THE VILLAGE AT WILTON MANORS
WILTON MANORS, FLORIDA

ARCHITECTURAL
Studio, Inc.

Architecture
Planning

300 Avenue of Champions
Suite 260
Palm Beach Gardens, Florida 33418
Phone 561.202.6990
Fax 561.296.2494
archstudiofl.com

drawing
ELEVATIONS

sheet
A-5

COMMUNITY FEATURES

- **Pet friendly**
- **Rent first year, twice a year**
- **Courtyard pool and amenity area**
- **Professionally designed landscaping**
- **Small and intimate**

LOCATION

- **One block to Wilton Drive**
- **Walkable to numerous shops, bars and restaurants**
- **Short drive to downtown Fort Lauderdale, Las Olas and the beach**
- **Recreation at Hagen Park and Colohatchee Park**
- **Movies at AMC Coral Ridge and Gateway**
- **Near the NSU Art Museum and the Museum of Discovery and Science**
- **Close to Broward Center, Culture Room and BB&T Center**

FEATURES

- **Interior features:**
- **Three stories with approximately 1,700 sq. ft.**
- **Two-car garage**
- **Larger-than-normal units**
- **9'+ ceilings**
- **Exterior features:**
- **Covered balconies**